

SPECIFICATIONS

Operating weight	16,300 kg (35,935 lb)
Weight based on a machine configuration with arm 2,900 mm (9' 6"), boom 4,600 mm (15' 1"), track shoe 600 mm (24 in), full fluids, operator, standard counterweight, cold start, track guard, and a 0.36 m ³ (47 yd ³) bucket.	
Bucket capacity	0.36 m³ (0.47 yd³)

ENGINE	
Description	
Cummins EPA Tier 4 Final / EU Stage IV, 4.5 L (1.19 gal), 4-cylinder straight turbocharged diesel engine	
Emission rating	Tier 4 Final / EU Stage IV
Engine manufacturer	Cummins
Engine model	QSB 4.5
Aspiration	Variable-Geometry Turbocharger (VGT)
Charged air cooling	Aftercooler
Cooling fan drive	Viscous clutch
Displacement	4.5 L (1.19) gal 4,500 cm ³ (275 in ³)
Rated speed	2,200 rpm
Engine output - net (SAE J1349 / ISO 9249)	84.3 kW (113 Hp)
Engine output - gross (SAE J1995 / ISO 14396)	90 Kw (121 Hp)
Maximum torque	470 N.m @1,500 rpm (347 lbf-ft @1,500 rpm)
Bore x Stroke	107 x 124 mm (4.2 x 4.9 in)

DRIVE AND BRAKES	
Description	
Driven by a one-piece two-gear piston hydraulic motor and reducer with small volume and strong traction. The motor and hydraulic pipelines are hidden in the track mechanism to prevent damage from rugged road surfaces. The parking brake and shock-absorbing valve are installed inside the motor, ensuring stable travelling and parking as well as reliable braking.	
Max. travel speed	High: 6.0 km/h (3.7 mph) Low: 3.5 km/h (2.2 mph)
Gradeability	35°/70%
Max. drawbar pull	124 kN (27,876 lbf)

SWING SYSTEM	
Description	
The high-torque piston swing motor, with integral spring set and automatic hydraulic release swing brake, is bolted directly to the swing reduction planetary swing gear box. The swing brake automatically resets for safer operation within five seconds of the swing function lever being brought to neutral. This insures safe travel and parking conditions.	
Swing speed	12.94 rpm
Swing torque	80,800 N.m (59,648 lbf-ft)

HYDRAULIC SYSTEM	
Main pump	
Type	Two variable displacement piston pumps
Maximum flow	2 x 120 L/min (2 x 31.7 gal/min)
Pilot pump	
Type	Gear pump
Maximum flow	19 L/min (5 gal/min)
Relief valve setting	
Implement	34.3/37.3 MPa (4,975 / 5,410 PSI)
Travel circuit	34.3 MPa (4,975 PSI)
Slew circuit	25.5 MPa (3,698 PSI)
Pilot circuit	3.9 MPa (566 PSI)
Hydraulic cylinders	
Boom Cylinder – Bore x Stroke	Φ105 x 990 mm (Φ4.1" x 3' 3" ft/in)
Stick Cylinder – Bore x Stroke	Φ115 x 1,175 mm (Φ4.5" x 3' 10" ft/in)
Bucket Cylinder – Bore x Stroke	Φ95 x 885 mm (Φ3.7" x 2' 11" ft/in)

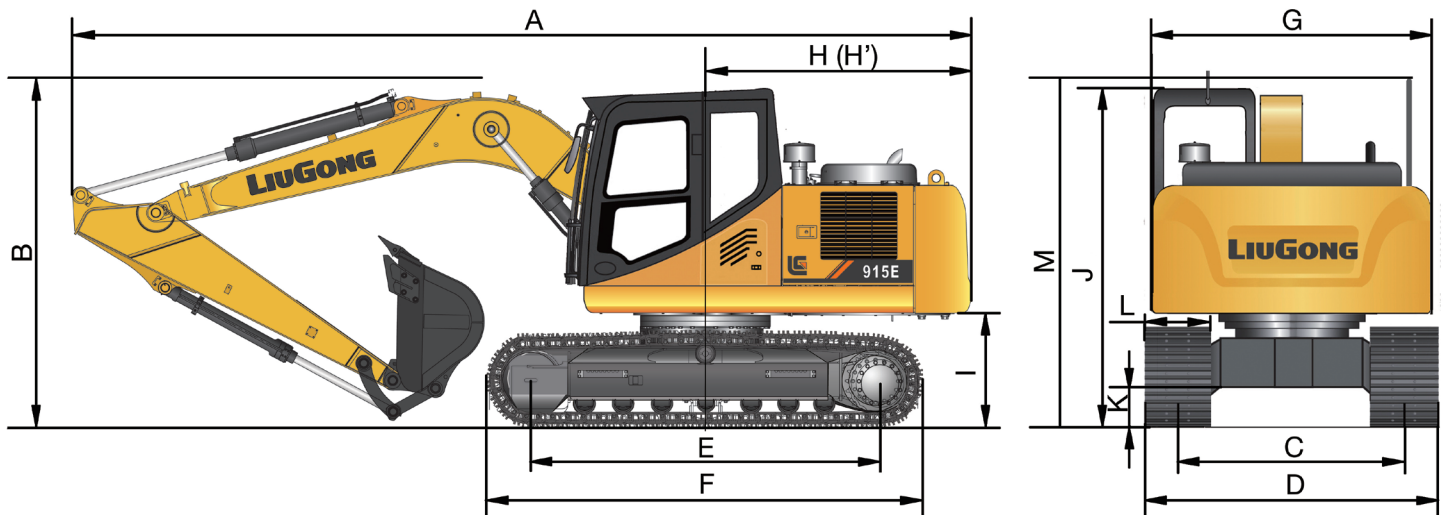
UNDERCARRIAGE	
Track shoe each side	46
Link pitch	190 mm (7.5 in)
Shoe width, triple grouser	600/700/800/900 mm (24"/27.5"/31.5"/35.4")
Bottom rollers each side	7
Top rollers each side	1

ELECTRIC SYSTEM	
System Voltage	24 V
Batteries	2 x 12 V
Alternator	24V-70A
Start motor	24V-4.8kW (24V-6.4Hp)

SERVICE CAPACITIES	
Fuel tank	245 L (64.7 gal)
Engine oil	11 L (2.9 gal)
Final drive (each)	2.5 L (0.7 gal)
Swing drive	3 L (0.8 gal)
Cooling system	21 L (5.5 gal)
Hydraulic reservoir	160 L (42.3 gal)
Hydraulic system total	240 L (63.4 gal)
DEF tank	16.9 L (4.5 gal)

SOUND PERFORMANCE	
Interior Sound Power Level (ISO 6396)	70 dB(A)
Exterior Sound Power Level (ISO 6395)	100 dB(A)

MACHINE WEIGHTS AND GROUND PRESSURE	
Operating weight	16,300 kg (35,935 lb)
Shoe width	600 mm (24 in)
Boom	4.6 m (15'1")
Arm	2.9 m (8'2")
Bucket	0.36 m ³ (0.47 yd ³)
Counterweight	2,300 kg (5,071 lb)



DIMENSIONS

Boom	4,600 mm (15' 1")	
Arm Options	2,500 mm (8' 2")	2,900 mm (9' 6")
A Shipping Length	7,750 mm (25' 5")	
B Shipping Height – Top of Boom	3,055 mm (10' 0")	
C Track Gauge	1,990 mm (6' 6")	
D Undercarriage Width – with 600mm shoes	2,590 mm (8' 6")	
E Length to Center of Rollers	3,010 mm (9' 11")	
F Track Length	3,746 mm (12' 3")	
G Overall Width of Upper structure	2,490 mm (8' 2")	
H Tail Swing Radius	2,305 mm (7' 7")	
I Counterweight Ground clearance	960 mm (3' 2")	
J Overall Height of Cab	3,055 mm (10' 0")	
K Min. Ground clearance	430 mm (1' 5")	
L Track Shoe Width	600 mm (24")	

BOOM DIMENSIONS

Boom	4,600 mm (15' 1")
Length	4,760 mm (15' 7")
Height	1,667 mm (5' 6")
Width	565 mm (with boom hinge pin 675 mm) / 1' 10" (with boom hinge pin 2' 3")
Weight	842 kg (1,857 lbs)

Cylinder, piping and pin included.
Boom cylinder pin excluded.

ARM DIMENSIONS

Arm	2,900 mm (9' 6")	2,500 mm (8' 2")
Length	3,659 mm (12' 0")	3,260 mm (10' 8")
Height	704 mm (2' 4")	645 mm (2' 1")
Width	370 mm (1' 3") (with hinge pin)	370 mm (1' 3") (with hinge pin)
Weight	605 kg (1,334 lbs)	555 kg (1,224 lbs)

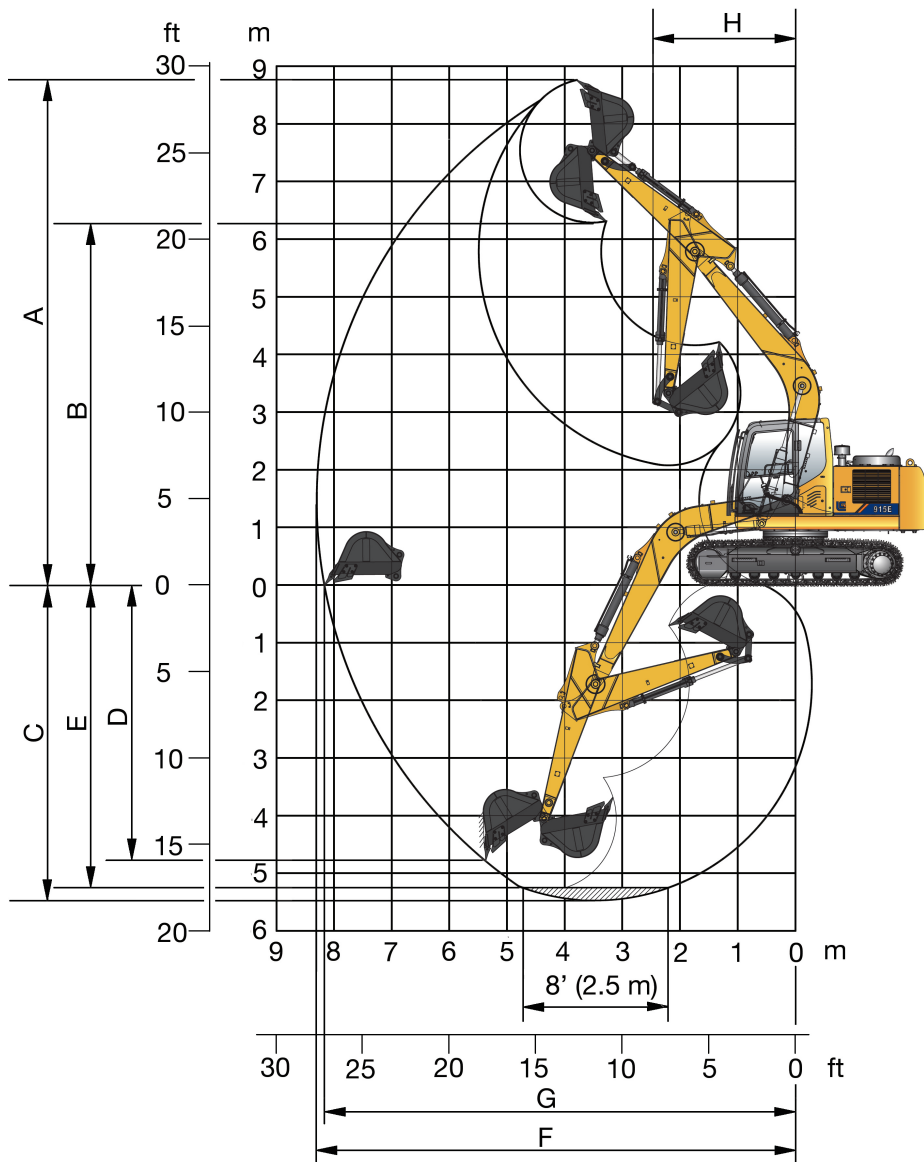
Cylinder, linkage and pin included.

BUCKET SELECTION GUIDE

					915E	
					4.6m (15' 1") HD Boom	
Bucket type	Capacity	Cutting width	Weight	Teeth pcs	2.9m (9' 6") Arm	
General purpose	0.36 m ³ (0.47 yd ³)	748 mm (2' 5")	390 kg (860 lbs)	4	B	

The recommendations are given as a guide only, based on typical operation conditions. Bucket capacity based on ISO 7451, heaped material with a 1:1 angle of repose.

Maximum material density:
 A 1200-1300 kg/m³ (2023-2191 lb/yd³): Coal, Caliche, Shale
 B 1400-1600 kg/m³ (2360-2697 lb/yd³): Wet earth and clay, limestone, sandstone
 C 1700-1800 kg/m³ (2865-3034 lb/yd³): Granite, wet sand, well blasted rock
 D 1900 kg/m³ (3203 lb/yd³): Wet mud, Iron ore
 NA. Not applicable



WORKING RANGE

Boom	4,600 mm (15'1")	
Arm Options	2,500 mm (8' 2")	2,900 mm (9' 6")
A. Max. digging reach	8,300 mm (27' 3")	8,600 mm (28' 3")
B. Max. digging reach on ground	8,170 mm (26' 10")	8,490 mm (27' 10")
C. Max. digging depth	5,470 mm (17' 11")	5,870 mm (19' 3")
D. Max. digging depth (2.44 m level)	5,250 mm (17' 3")	5,670 mm (18' 7")
E. Max. vertical wall digging depth	4,770 mm (15' 8")	5,280 mm (17' 4")
F. Max. cutting height	8,760 mm (28' 9")	8,830 mm (29' 0")
G. Max. dumping height	6,310 mm (20' 8")	6,400 mm (21' 0")
H. Min. front swing radius	2,305 mm (7' 7")	2,305 mm (7' 7")
Bucket Digging Force (ISO, KN)	Normal	89.8 kN (20,188 lbf)
	Power Boost	96.9 kN (21,784 lbf)
Stick Digging Force (ISO, KN)	Normal	64.9 kN (14,590 lbf)
	Power Boost	70 kN (15,737 lbf)
Bucket Capacity	0.36 m ³ (0.47 yd ³)	
Bucket Tip Radius	1,254 mm (4' 1")	

Lifting capacity at the arm end without bucket.
For lifting capacity including bucket, weight of the bucket or the bucket with quick coupler must be deducted from the lifting capacities.

Lifting capacities are based on the machine standing on a firm, uniform supporting surface.



Rating over-front (Cf)



Rating over-side (Cs)

- Do not attempt to lift or hold any load that is greater than these rated values at their specified load radius and height. Weight of all accessories must be deducted from the above lifting capacities.
- The rated loads are in compliance with ISO 10567 Hydraulic Excavator Lift Capacity Rating Standard. They do not exceed 87% of hydraulic lifting capacity or 75% tipping load.
- Ratings at bucket lift hook.

- Lifting capacities are based on machine standing on level, firm and uniform ground.
- *indicates the load is limited by hydraulic capacity rather than tipping capacity.
- Operator should be fully acquainted with the Operator's and Maintenance Instructions before operating this machine and rules for the safe operation of equipment should be adhered to at all times.

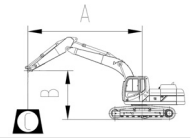
LIFTING CAPACITY (METRIC)

915E with 600 mm shoes, 2,900 mm arm (Standard)

A: Reach from swing center
B: Bucket hook height
C: Lifting capacity
Cf: Rating over front
Cs: Rating over side

Conditions

Boom length: 4,600 mm one-piece boom
Arm length: 2,900 mm
Bucket: None
Shoes: 600 mm triple grouser
Unit: kg



Blade: Down

A Units (m)

B (m)	1.5		3		4.5		6		MAX REACH		Distance
	Cf	Cs	Cf	Cs	Cf	Cs	Cf	Cs	Cf	Cs	
6									1780*	1780*	5.9
4.5					3410*	3410*	3350*	2570	1710*	1710*	6.8
3			5380*	5380*	4170*	3840	3630*	2500	1650*	1650*	7.3
1.5			7930*	6480	5130*	3590	4040*	2400	2050*	1770	7.4
0			7880*	6070	5830*	3390	4360*	2300	1930*	1770	7.3
-1.5	4780*	4780*	9050*	5980	5980*	3310	4380*	2260	2380*	1940	6.8
-3	7980*	7980*	7940*	6060	5410*	3330			3150*	2360	5.9

Blade: Up

A Units (m)

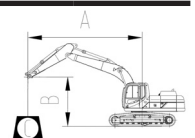
B/A (m)	1.5		3		4.5		6		MAX REACH		Distance
	Cf	Cs	Cf	Cs	Cf	Cs	Cf	Cs	Cf	Cs	
6									1780*	1780*	5.9
4.5					3410*	3410*	3350*	2570	1710*	1710*	6.8
3			5380*	5380*	4170*	3840	3630*	2500	1650*	1650*	7.3
1.5			7930*	6480	5130*	3590	3700	2400	2050*	1770	7.4
0			7880*	6070	5500	3390	3600	2300	1930*	1770	7.3
-1.5	4780*	4780*	9050*	5980	5400	3310	3560	2260	2380*	1940	6.8
-3	7980*	7980*	7940*	6060	5410*	3330			3150*	2360	5.9

915E with 600 mm shoes, 2,500 mm arm

A: Reach from swing center
B: Bucket hook height
C: Lifting capacity
Cf: Rating over front
Cs: Rating over side

Conditions

Boom length: 4,600 mm one-piece boom
Arm length: 2,500 mm
Bucket: None
Shoes: 600 mm triple grouser
Unit: kg



Blade: Down

A Units (m)

B (m)	1.5		3		4.5		6		MAX REACH		Distance
	Cf	Cs	Cf	Cs	Cf	Cs	Cf	Cs	Cf	Cs	
6					3610*	3610*			2210*	2210*	5.4
4.5					3800*	3800*	3430*	2560	1940*	1940*	6.4
3			6150*	6150*	4530*	3800	3880*	2500	3440*	2170	6.6
1.5			8520*	6340	5420*	3570	4230*	2410	3950*	2110	6.6
0			7340*	6050	5980*	3400	4470*	2330	4060*	2060	6.6
-1.5	5270*	5270*	8830*	6030	5960*	3340	4320*	2310	2770*	2140	6.4
-3	9270*	9270*	7430*	6150	5120*	3400			3920*	2700	5.4

Blade: Up

A Units (m)

B (m)	1.5		3		4.5		6		MAX REACH		Distance
	Cf	Cs	Cf	Cs	Cf	Cs	Cf	Cs	Cf	Cs	
6					3610*	3610*			2210*	2210*	5.4
4.5					3800*	3800*	3430*	2560	1940*	1940*	6.4
3			6150*	6150*	4530*	3800	3810	2500	3300	2170	6.6
1.5			8520*	6340	5420*	3570	3710	2410	3230	2110	6.6
0			7340*	6050	5500	3400	3630	2330	3180	2060	6.6
-1.5	5270*	5270*	8830*	6030	5430	3340	3600	2310	2770*	2140	6.4
-3	9270*	9270*	7430*	6150	5120*	3400			3920*	2700	5.4

Lifting capacity at the arm end without bucket.
For lifting capacity including bucket, weight of the bucket or the bucket with quick coupler must be deducted from the lifting capacities.
Lifting capacities are based on the machine standing on a firm, uniform supporting surface.



Rating over-front (Cf)



Rating over-side (Cs)

- Do not attempt to lift or hold any load that is greater than these rated values at their specified load radius and height. Weight of all accessories must be deducted from the above lifting capacities.
- The loads are in compliance with ISO 10567 Hydraulic Excavator Lift Capacity Rating Standard. They do not exceed 87% of hydraulic lifting capacity or 75% tipping load.
- Ratings at bucket lift hook.

- Lifting capacities are based on machine standing on level, firm and uniform ground.
- *indicates the load is limited by hydraulic capacity rather than tipping capacity.
- Operator should be fully acquainted with the Operator's and Maintenance Instructions before operating this machine and rules for the safe operation of equipment should be adhered to at all times.

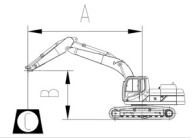
LIFTING CAPACITY (IMPERIAL)

915E with 24 in shoes, 9' 6" arm (Standard)

A: Reach from swing center
B: Bucket hook height
C: Lifting capacity
Cf: Rating over front
Cs: Rating over side

Conditions

Boom length: 15' 1" one-piece boom
Arm length: 9' 6"
Bucket: None
Shoes: 24 in triple grouser
Unit: lb



Blade: Down

A (Unit ft)

B (ft)	5		10		15		20		MAX REACH		Distance
	Cf	Cs	Cf	Cs	Cf	Cs	Cf	Cs	Cf	Cs	
20									4195*	4195*	19.0
15					7469*	7469*	7140*	5540	4301*	4301*	22.0
10			11565*	11565*	9052*	8278	7938*	5394	5950*	4349	23.0
5			17067*	13950	11115*	7744	8802*	5171	5341*	3979	24.0
0			18309*	13053	12641*	7325	9481*	4980	3968*	3904	24.0
-5	10720*	10720*	19609*	12861	12960*	7142	9464*	4896	6545*	4349	22.0
-10	18015*	18015*	17138*	13035	11638*	7195			8412*	5321	19.0

Blade: Up

A (Unit ft)

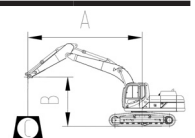
B (ft)	5		10		15		20		MAX REACH		Distance
	Cf	Cs	Cf	Cs	Cf	Cs	Cf	Cs	Cf	Cs	
20									4195*	4195*	19.0
15					7469*	7469*	7140*	5540	4301*	4301*	22.0
10			11565*	11565*	9052*	8278	7938*	5394	5950*	4349	23.0
5			17067*	13950	11115*	7744	7980	5171	5341*	3979	24.0
0			18309*	13053	11825	7325	7768	4980	3968*	3904	24.0
-5	10720*	10720*	19609*	12861	11615	7142	7676	4896	6545*	4349	22.0
-10	18015*	18015*	17138*	13035	11638*	7195			8342	5321	19.0

915E with 24 in shoes, 8' 3" arm

A: Reach from swing center
B: Bucket hook height
C: Lifting capacity
Cf: Rating over front
Cs: Rating over side

Conditions

Boom length: 15' 1" one-piece boom
Arm length: 8' 3"
Bucket: None
Shoes: 24 in triple grouser
Unit: lb



Blade: Down

A (Unit ft)

B/A (ft)	5		10		15		20		MAX REACH		Distance
	Cf	Cs	Cf	Cs	Cf	Cs	Cf	Cs	Cf	Cs	
20					8026*	8026*			6080*	6080*	17.0
15					8311*	8311*	6779*	5507	6779*	5507	20.0
10			13203*	13203*	9830*	8212	8472*	5394	6593*	4669	22.0
5			18350*	13666	11735*	7702	9208*	5196	5588*	4272	23.0
0			17039*	13000	12969*	7341	9700*	5035	8452*	4451	22.0
-5	11829*	11829*	19160*	12951	12912*	7217	9314*	4997	5729*	4722	21.0
-10	20945*	20945*	16029*	13218	10981*	7343			9230*	6267	17.0

Blade: Up

A (Unit ft)

B/A (ft)	5		10		15		20		MAX REACH		Distance
	Cf	Cs	Cf	Cs	Cf	Cs	Cf	Cs	Cf	Cs	
20					8026*	8026*			6080*	6080*	17.0
15					8311*	8311*	6779*	5507	6779*	5507	20.0
10			13203*	13203*	9830*	8212	8214	5394	6593*	4669	22.0
5			18350*	13666	11735*	7702	7998	5196	5588*	4272	23.0
0			17039*	13000	11829	7341	7821	5035	6862	4451	22.0
-5	11829*	11829*	19160*	12951	11688	7217	7779	4997	5729*	4722	21.0
-10	20945*	20945*	16029*	13218	10981*	7343			9230*	6267	17.0

STANDARD EQUIPMENT

ENGINE SYSTEM

- Cummins engine: turbocharged, 4 cylinder, 4 stroke water cooled diesel engine
- Auto-idle speed control
- Air filter with pre-cleaner
- Engine oil filter
- Pre-filter with water separator
- Radiator, oil cooler and intercooler
- IPC (Intelligent Power Control) System
- Engine overheat prevention system

HYDRAULIC SYSTEM

- Power boost
- Boom and arm regeneration circuits
- Pilot oil filter
- Load holding valve
- Pilot control shut-off lever
- Swing with anti-reverse function

OPERATOR STATION

- IPC (Intelligent Power Control) System
- 6-working mode selection system: Power Mode, Economy Mode, Fine Mode, Lifting Mode, Breaker Mode, Attachment Mode
- Highly pressurized and tightly sealed cab with all-around visibility, large roof window with slide sun shade, front window wiper and removable lower window
- Air conditioner, heater, defroster
- AM/FM Radio with MP3 audio jack
- Color LCD monitor with alarms, filter/fluid change, fuel rate, water temperature, work mode, fault code, working hour, etc
- Glass-breaking hammer
- Ashtray, cigarette lighter
- Cup holder
- Floor mat
- Storage box
- Front glass lower guard

UPPERSTRUCTURE

- Rear view mirror (right & left side)
- 2 batteries
- Single key locking
- Fuel gauge
- Hydraulic oil level gauge
- Storage box
- Swing parking brake
- Boom lights
- Exterior lights integrated into storage box
- Roll-Over Protective Structures (ROPS)

UNDERCARRIAGE

- 600 mm (24 in) triple grouser track-shoes
- 2 track frame under-guards (each side)
- Towing eye on base frame

DIGGING EQUIPMENT

- 4600 mm (15' 1") boom
- 2900 mm (9' 6") arm
- 2,300 kg (5,071 lbs) counterweight
- 0.36 m³ (0.47 yd³) bucket (SAE, heaped)

OPTIONAL EQUIPMENT

ENGINE SYSTEM

- Electrical fuel refilling pump

HYDRAULIC SYSTEM

- Security valves (2 on boom and 1 on arm)
- Control pattern change valve
- Hydraulic piping:
 - Breaker & shear
 - Slope & rotator
 - Grapple
 - Oil drain line
 - Quick coupler
- Hydraulic quick coupler

OPERATOR STATION

- Power outlet 24 V to 12 V converter
- 4 LED cab top lights
- Rotating beacon
- Rear view camera
- Air suspension seat
- Control joysticks with 2 switch & 1 proportional
- Falling-Object Protective Structures (FOPS)
- Safety net for front window
- Rain visor
- Travel alarm

UPPERSTRUCTURE

- Crash-proof beam

UNDERCARRIAGE

- 600 mm (24 in) track-shoes with triple gousers
- 2 track frame under-guards (each side)

DIGGING EQUIPMENT

Arm: 2,500 mm (8' 2")



Guangxi LiuGong Machinery Co., Ltd.

No. 1 Liutai Road, Liuzhou, Guangxi 545007, PR China
T: +86 772 388 6124 E: overseas@liugong.com
www.liugong.com

LG-SP-915E-T4F-WW-A4-24022017-ENG

Like and follow us:



The LiuGong series of logos herein, including but not limited to word marks, device marks, letter of alphabet marks and combination marks, as the registered trademarks of Guangxi LiuGong Group Co., Ltd. are used by Guangxi LiuGong Machinery Co., Ltd. with legal permission, and shall not be used without permission. Specifications and designs are subject to change without notice. Illustrations and pictures may include optional equipment and may not include all standard equipment. Equipment and options varies by regional availability.